

The Wonderful World of Husqvarna Viking Embroidery

Husqvarna Viking has been the leader in quality embroidery designs many featuring special techniques and projects to create with them since introducing the #1+ with hoop embroidery in the early 90's. Many of these techniques were stitched by hand for centuries and now are stitched faster, easier and even more precisely by Husqvarna Viking.

Embroidery today encompasses so much more than the simple designs of yesteryear! Today we have a great variety of specialty types of designs to choose from! Many are included on the new Designer Diamond and Designer Topaz machines. These different designs are the result of suggestions from sewers all around the world, and from the phenomenal development team in Sweden! Their vision and openness to all ideas, has resulted in beautiful masterpiece quality embroidery that we enjoy today! They include full color booklets with the designs printed actual size in the package, or on the CD as a PDF or download when purchasing from www.myembroideries.com.

Thread Velvet® became an instant favorite when it was introduced a year or so ago. Sections of the designs are stitched in a satin stitch, building up layers, often in two colors. When the design is complete, the satin stitch is then “sliced” down the middle, with Havel’s Ultra Pro “surgical” seam ripper (#140 000649)! A burst of steam from your iron, or just the humidity in the air allows the Thread Velvet® sections to “bloom” into a texture that looks and feels just like the finest, silk velvet. Go to www.husqvarnaviking.com, USA, Education, Tips and Hints for a tip sheet on embroidering with Thread Velvet® designs. Photo shown is from Thread Velvet Décor #196 (#413001601). Use the Sensor Q foot (#412 59 75-45) to help stitch the build up of “velvet”! Light & Tacky Tear-A-Way Stabilizer (#14000 29 79) and Fusible No Show Mesh (#140 00 09 38) work great for Thread Velvet Designs. Look for Thread Velvet designs on www.myembroideries.com by typing the word “velvet” into the search box found in the upper left corner of the home page. Your customers can order one thread velvet design here for class.



Cutwork has been a favorite of embroiderers through the centuries. Originally done by hand, machine embroidered cutwork has been a favorite in past years. The advent of a new generation of water soluble stabilizers like Inspira Aqua Magic (#140 00 06 67) has made it easier than ever! Your Husqvarna Viking machine will stop, after straight stitching an area, to allow you to cut the fabric out of that section, creating the cutwork area, then the edges are all finished! Go to www.husqvarnaviking.com, USA, Education, Free Monthly Projects, scroll down to Other Fun Projects for a Cutwork Bread Cloth. It has lots of tips for stitching Cutwork Designs! Photo Shown is from Husqvarna Viking Cutwork Finesse #202 (#413152201). Havel's (#140001013) Double-curved w/Extra Fine Tip work great when cutting the holes in the cutwork design. Try placing a pretty batik or print under the cutwork area after cutting the holes for a completely different (and not open) technique using any of your Husqvarna Viking Cutwork designs.



Candlewicking, originally a hand technique has been re-invented both in stitches as well as embroidery. There are a number of different collections as well as several pretty designs included in the Husqvarna Viking Designer Diamond. The candlewick stitches resemble hand stitched French knots! No special foot is needed for the embroidered version, but the new Specialty Candlewicking Foot (413 16 23-45) is required for nice results when stitching the stitches built in to your Designer Diamond. Photo Shown is from Husqvarna Viking Candlewicking Creations #198 (#415169898). Try your Sensor Q Foot (#412 59 75-45) and Clear'N'Melt Stabilizer (#141 00 06 59) on your Candlewick Designs.



Lace: has been a favorite of “ladies” for generations on garments, linens, doilies and more and never, goes out of style! Lace designs are sewn either on water soluble stabilizer, or on net or tulle, depending on how they are digitized. Just be sure to read the instructions that come with the collection to determine which type of lace design they are. Then, after stitching, soak in water and remove the stabilizer to reveal beautiful lace embroidery. You can make everything from medallions, to ornaments, to collars from the beautiful lace that is available today. Photo Shown is from Husqvarna Viking Vintage Lace #166 (#412887601 or www.myembroideries.com #216600. Two layers of Inspira Aqua Magic (#140 00 06 67) is the perfect stabilizer for your lace.



Applique: Embroidery designs have long been a favorite. They allow you to integrate beautiful fabrics into your embroidery to add interest, and to allow large areas to be filled with fabric instead of stitches. Your Husqvarna Viking Sewing/Embroidery machine makes it easy. The area where the fabric will be placed is outlined with stitches first. You then place a patch of fabric on that stitched area, and touch Start. The appliqué fabric will be straight stitched in place. The Husqvarna Viking machine then stops and allows you to trim the excess fabric with your Havel's Lace/appliqué trimming scissors (#140 00 29 51). A satin stitch then stitches over the edge of the appliqué, covering the raw edges. Use Inspira Tear-A-Way Light (#141 00 08 19) for your Applique Designs

Three Dimensional Embroideries: Pop Up embroideries delight young and old alike. They give life to fun little “people and animals”, and add dimension to beautiful flowers and leaves. The “parts” are stitched first. Sometimes they are freestanding, and stitched on water soluble stabilizer only. Other times Inspira Aqua Magic (#140 00 06 67) Water Soluble stabilizer is hooped, and fabric is laid on the stabilizer. The first stitching traces the shape with a straight stitch. The machine will then stop for you to cut the excess fabric and the design finishes as if it is an appliqué. All the “pop-up” parts are stitched first, then you begin the main embroidery. After the main embroidery is complete, the Husqvarna Viking Sewing/Embroidery machine prompts you to place the parts, for example, the ear, on the puppy. You put it on the marked spot and the embroidery stitches it in place. Photo Shown is from Husqvarna Viking Blooming Flowers #162

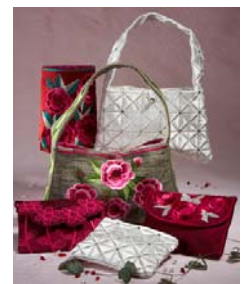


Quilting Designs: Innovative thinking brought us quilting in the hoop designs a few years ago. This is clever system of tracing the “pattern” first, in thread on a base fabric. The Husqvarna Viking Sewing/Embroidery Machine next prompts you to place the patches of fabric on the base right sides together. It stitches the seam, and prompts you to place the next piece. When all the patches are in place, the embroidery stitches beautiful crazy patch embroidery over the seams. The sumptuous, elegant embroidery of yesteryear, stitched in an afternoon!

Photo Shown is from Husqvarna Viking Patchwork #147. Inspira Cut-A-Way Light (141 00 08 01) is good as a base, to stitch the patches onto. (www.myembroideries.com #214700)

Pretty Purses: Husqvarna Viking pioneered techniques where not only is the embroidery stitched on your fabric, but you cut out the project while it still hooped, place the lining, and finish the actual purse ready to sew the last two side seams, all in the hoop! These pretty purses are an example of innovative thinking and great creativity!

Photo Shown is from Husqvarna Viking Pretty Purses in the Hoop #171 (412888101). Inspira Tear-A-Way Stabilizer (#140 00 16 18)



Yarn Couching: Texture is trendy! What better texture than luxurious, “fuzzy” yarns! Whether you choose sparkly metallic or soft wool, the yarn is magically stitched in place with a special Yarn Couching Feet Set #920215-096 and special embroidery designs. This same technique can be done free motion. The yarn sections are combined with traditional thread embroidery to give us elegant, textured embroidery. Photo Shown is from Husqvarna Viking Embellish with Yarn #197 (#413001701) Spangle Yarn (#620079996) works perfectly for the Yarn Couching Designs!



Wing Needle: Beautiful heirloom and quilting designs using a hemstitch needle give traditional hemstitching effects. The designs are digitized to recreate the delicate entredeux and other hemstitches used in heirloom sewing. They are best stitched in natural fabrics. When your Husqvarna Viking Sewing/Embroidery machine prompts you, just put in your wing needle and watch the magic happen! Photo Shown is from Husqvarna Viking Wing Needle Embroidery #193 (#413001301-www.myembroideries.com #219300) Try either Inspira Aqua Magic (#140 00 06 67) Water Soluble stabilizer or Inspira Tear-A-Way Light (#141 00 08 19) for your wing needle designs.

Thread Art Tapestry: From Free motion artistry by Sue Patten, to magic in the hoop, it’s all in the thread! Using specially designed Robison Anton Thread Art Tapestry Thread Set (#140 00 28 61) the Thread Art Tapestry designs echo the beautiful free motion art quilting done by Sue. Embroidery turns everyone into a Thread Artist! The designs are specially digitized to utilize the threads with long color variations. Photo Shown is from Husqvarna Viking Thread Art Tapestry #183 413000301-www.myembroideries.com #218300 .



Heirloom Insertions: Many of the expensive trims needed for heirloom sewing can actually be created on your Husqvarna Viking Sewing/Embroidery Machine thanks to the innovative heirloom experts like this collection by Connie Palmer and imaginative digitizing team! Together, they create the beautiful, delicate trims and insertions needed to create heirlooms to be treasured through the centuries to come! Photo Shown is from Husqvarna Viking Heirloom Insertions Embroidery #189 (#413000901). Inspira Aqua Magic (#140 00 06 67) Water Soluble stabilizer is perfect for the insertions.

Famous Artists:

Husqvarna Viking continues to offer design collections from famous artists from all over the world. Look for collections from Kaffe Fassette, Martha Pullen, Janice Stewart, Sue Penn and more!